

POWER QUALITY PRODUCTS

INDUSTRIAL



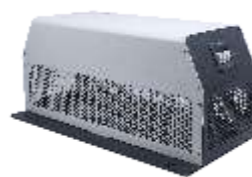
SINGLE PHASE LINE REACTOR - PQR
 230VAC | 2A to 1000A | 2% to 4% Impedance | 50Hz



THREE PHASE LINE REACTOR - PQR
 400VAC | 2.4A to 1000A | 2% to 4% Impedance | 50Hz



THREE PHASE DV/DT REACTOR - PQR
 400VAC | 4A to 1000A | 0.8% Impedance | 50Hz



THREE PHASE PASSIVE HARMONIC FILTER - PQPH
 380 to 415VAC | 1.6A to 1000A | 50Hz



THREE PHASE DV/DT FILTER - PQDT
 400VAC | 4A to 1100A | 50Hz



THREE PHASE SINEWAVE FILTER - PQSW
 400VAC | 2.3A to 1000A | 50Hz

EMI/EMC PRODUCTS

IEC INLET

INDUSTRIAL



MF300
 250VAC | 1A to 16A | 50/60Hz
 IEC Inlet Mounting

Standard	High	Very High
<div style="width: 100%; height: 5px; background-color: green;"></div>		



MF310
 250VAC | 1A to 10A | 50/60Hz
 IEC Inlet Mounting with Fuse

Standard	High	Very High
<div style="width: 100%; height: 5px; background-color: green;"></div>		



MF310S
 250VAC | 1A to 10A | 50/60Hz
 IEC Inlet Mounting with Switch

Standard	High	Very High
<div style="width: 100%; height: 5px; background-color: green;"></div>		



MF320
 250VAC | 1A to 10A | 50/60Hz
 IEC Inlet Mounting with Fuse and Switch

Standard	High	Very High
<div style="width: 100%; height: 5px; background-color: green;"></div>		



MF320-2D
 250VAC | 1A to 10A | 50/60Hz
 IEC Inlet Mounting with Fuse and Switch

Standard	High	Very High
<div style="width: 100%; height: 5px; background-color: green;"></div>		



MEDICAL



MF140
 250VAC | 1A to 16A | 50/60Hz
 IEC Inlet Mounting

Standard	High	Very High
<div style="width: 100%; height: 5px; background-color: green;"></div>		



MF150
 250VAC | 1A to 10A | 50/60Hz
 IEC Inlet Mounting with Fuse

Standard	High	Very High
<div style="width: 100%; height: 5px; background-color: green;"></div>		



MF160
 250VAC | 1A to 10A | 50/60Hz
 IEC Inlet Mounting with Fuse and Switch

Standard	High	Very High
<div style="width: 100%; height: 5px; background-color: green;"></div>		



SINGLE PHASE

INDUSTRIAL



MF420

250VAC | 1A to 125A | 50/60Hz
Chassis Mount

Standard	High	Very High
<div style="width: 100%; height: 5px; background-color: green;"></div>		



MF510

250VAC | 1A to 6A | 50/60Hz
Clamp Mount

Standard	High	Very High
<div style="width: 100%; height: 5px; background-color: green;"></div>		



MF530

250VAC | 1A to 10A | 50/60Hz
PCB Mount

Standard	High	Very High
<div style="width: 100%; height: 5px; background-color: green;"></div>		



MF210P

250VAC | 1A to 16A | 50/60Hz
Cylindrical Filter

Standard	High	Very High
<div style="width: 100%; height: 5px; background-color: green;"></div>		



MF430

250VAC | 1A to 60A | 50/60Hz
Chassis Mount

Standard	High	Very High
	<div style="width: 100%; height: 5px; background-color: green;"></div>	



MF410

250VAC | 1A to 100A | 50/60Hz
Chassis Mount

Standard	High	Very High
	<div style="width: 100%; height: 5px; background-color: green;"></div>	



MF420VF

250VAC | 1A to 50A | 50/60Hz
Chassis Mount

Standard	High	Very High
	<div style="width: 100%; height: 5px; background-color: green;"></div>	



MF420HP

250VAC | 1A to 50A | 50/60Hz
Chassis Mount

Standard	High	Very High
	<div style="width: 100%; height: 5px; background-color: green;"></div>	



MF410HP

250VAC | 1A to 30A | 50/60Hz
Chassis Mount

Standard	High	Very High
	<div style="width: 100%; height: 5px; background-color: green;"></div>	



MEDICAL



MF120

250VAC | 1A to 125A | 50/60Hz
Chassis Mount

Standard	High	Very High
<div style="width: 100%; height: 5px; background-color: green;"></div>		



MF110

250VAC | 1A to 100A | 50/60Hz
Chassis Mount

Standard	High	Very High
	<div style="width: 100%; height: 5px; background-color: green;"></div>	



MF130

250VAC | 1A to 60A | 50/60Hz
Chassis Mount

Standard	High	Very High
	<div style="width: 100%; height: 5px; background-color: green;"></div>	



TWO PHASE

INDUSTRIAL



MF422

440VAC | 1A to 100A | 50/60Hz
Chassis Mount

Standard	High	Very High
<div style="width: 100%; height: 5px; background-color: green;"></div>		



THREE PHASE



MF 423-3W

440/520VAC | 1A to 150A | 50/60Hz
Chassis Mount

Standard	High	Very High
<div style="width: 100%; height: 5px; background-color: green;"></div>		



MF 423-4W

440/520VAC | 1A to 150A | 50/60Hz
Chassis Mount

Standard	High	Very High
<div style="width: 100%; height: 5px; background-color: green;"></div>		



MF 423-3-2D

440/520VAC | 3A to 250A | 50/60Hz
Chassis Mount

Standard	High	Very High
<div style="width: 100%; height: 5px; background-color: green;"></div>		



MF 423-4-2D

440/520VAC | 6A to 250A | 50/60Hz
Chassis Mount

Standard	High	Very High
<div style="width: 100%; height: 5px; background-color: green;"></div>		



MF 423-3-2D-BS

440/520VAC | 7A to 150A | 50/60Hz
Book Shelf

Standard	High	Very High
<div style="width: 100%; height: 5px; background-color: green;"></div>		



MF 423-4-2D-BS

440/520VAC | 7A to 150A | 50/60Hz
Book Shelf

Standard	High	Very High
<div style="width: 100%; height: 5px; background-color: green;"></div>		



MF 423-3-3D-BB

440/520VAC | 300A to 1000A | 50/60Hz
Chassis Mount

Standard	High	Very High
<div style="width: 100%; height: 5px; background-color: green;"></div>		



MF 423-3-3D

440/520VAC | 6A to 250A | 50/60Hz
Chassis Mount

Standard	High	Very High
	<div style="width: 100%; height: 5px; background-color: green;"></div>	



INDUSTRIAL



MF 423-4-3D

440/520VAC | 6A to 250A | 50/60Hz
Chassis Mount

Standard	High	Very High
	<div style="width: 100%; height: 5px; background-color: green;"></div>	



MF 423-3-3D-BS

440/520VAC | 7A to 150A | 50/60Hz
Book Shelf

Standard	High	Very High
	<div style="width: 100%; height: 5px; background-color: green;"></div>	



MF 423-4-3D-BS

440/520VAC | 7A to 150A | 50/60Hz
Book Shelf

Standard	High	Very High
	<div style="width: 100%; height: 5px; background-color: green;"></div>	



MF 423-4-3DD

400/520VAC | 6A to 100A | 50/60Hz
Chassis Mount

Standard	High	Very High
	<div style="width: 100%; height: 5px; background-color: green;"></div>	



MF 423-4-3DD-BS

440/520VAC | 7A to 150A | 50/60Hz
Book Shelf

Standard	High	Very High
	<div style="width: 100%; height: 5px; background-color: green;"></div>	



CHOKES

INDUSTRIAL



DMC

250VAC | 0.5A to 25A | 50/60Hz

Standard	High	Very High
█		



CMC

250VAC | 0.5A to 32A | 50/60Hz

Standard	High	Very High
█		



DC FILTER

INDUSTRIAL



MF610

Up to 1200VDC | 25A to 2500A
Chassis Mount

Standard	High	Very High
	█	



MF620

Up to 1500VDC | 150A to 1600A
Chassis Mount

Standard	High	Very High
	█	



FEEDTHROUGH COMPONENTS

INDUSTRIAL



FTFDC

130VDC | 10A to 200A @ 60°C

Standard	High	Very High
	█	



FTCDC

130VDC | 6A to 300A @ 60°C

Standard	High	Very High
	█	



FTFAC

250VAC | 10A to 200A @ 60°C | 50/60Hz

Standard	High	Very High
	█	



FTCAC

250VAC | 6A to 300A @ 60°C

Standard	High	Very High
	█	



SURGE PROTECTORS

INDUSTRIAL



SINGLE PHASE SURGE SUPPRESSOR - S-SP

250VAC
Surge current: 20kA, 40kA @ 8/20μS



THREE PHASE SURGE SUPPRESSOR - T-SP

440VAC
Surge current: 20kA, 40kA @ 8/20μS



SINGLE PHASE RC FILTER - S-RCF

250VAC
Surge current: 6.5kA @ 8/20μS



THREE PHASE RC FILTER - T-RCF

440VAC
Surge current: 6.5kA @ 8/20μS



SINGLE PHASE RC NETWORK - RCN

250VAC